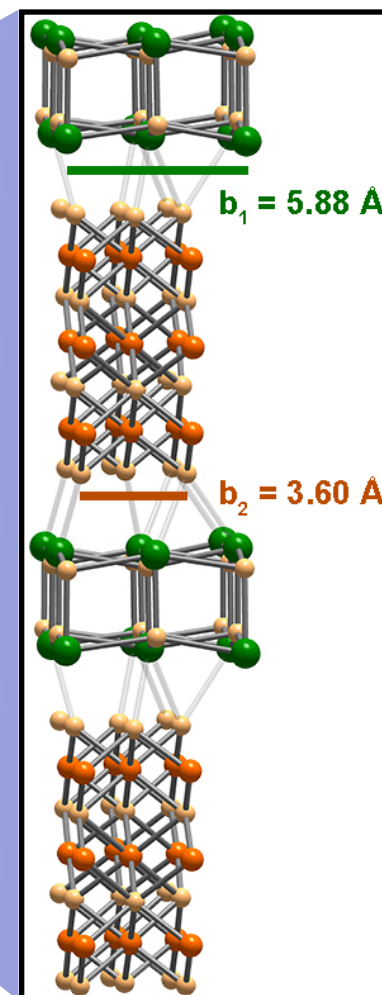
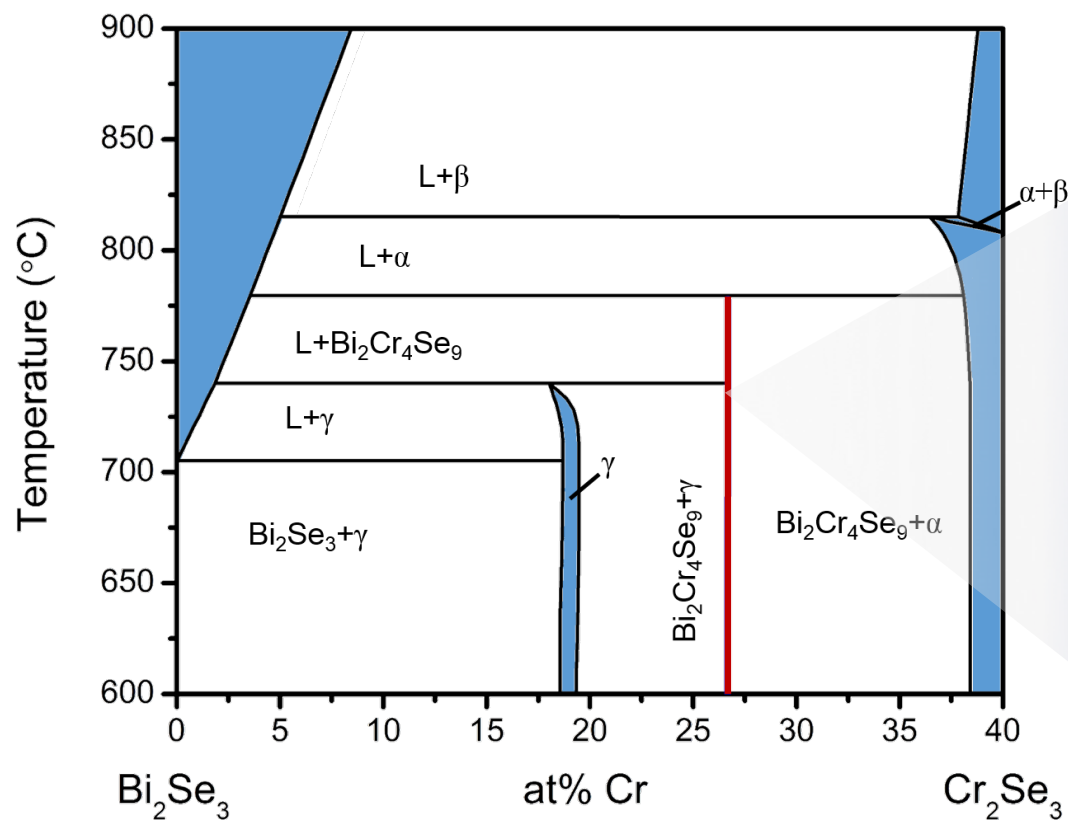


# Novel Forms of Magnetic Anisotropy to Create a New Class of Permanent Magnets

S. M. Clarke, J. M. Zadrozny, and D. E. Freedman

<sup>1</sup>Northwestern University Materials Research Science & Engineering Center



Magnetic anisotropy is the key component in permanent magnets. This research focuses on creating a new type of magnetic anisotropy, leading to synthesis and measurement of two new ternary compounds.