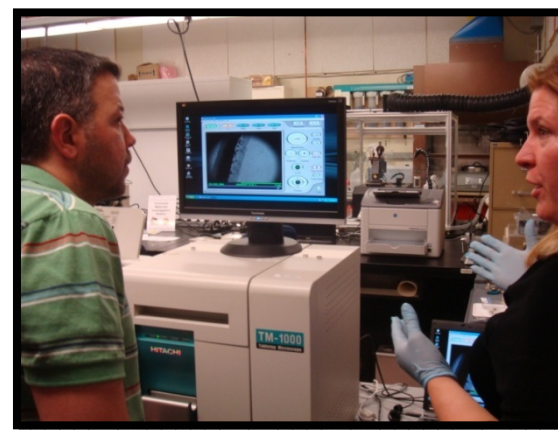
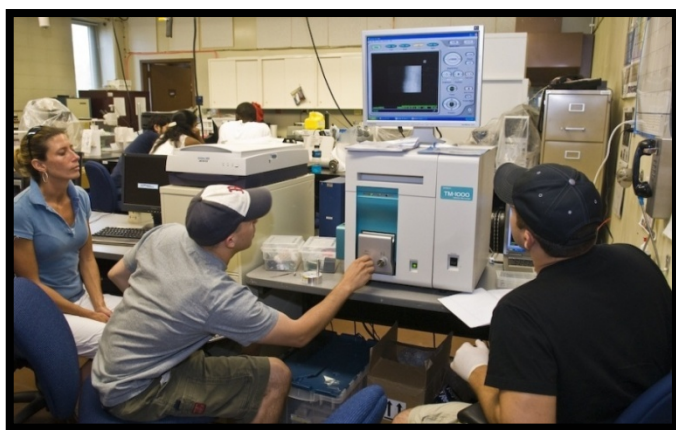


The CRISP/OWC “Seeing is Believing” Initiative



Made possible by a grant from the Connecticut Office of Workforce Competitiveness (OWC) the goal is to provide Connecticut’s teachers with cutting edge imaging tools for their classrooms. A table top scanning electron microscope (mini-SEM) with elemental analysis capabilities was purchased. Typical SEMs are large and require extensive training and maintenance. Initially teachers at high schools and Connecticut’s Community Technical Colleges (CTCs) are targeted for professional development and implementation.



In the CRISP NanoCharacterization Facility at SCSU, high school teachers are collecting images using the Tabletop SEM. Feedback on its ease of use and potential for impact on student learning is excellent.

C. Broadbridge, H. Edgecumbe